



# EPT20-15ET2

## Electric Pallet Truck 1.5t

- Perfect Upgrade of Reliability and Easy-maintenance

EP EQUIPMENT CO.,LTD  
[www.ep-ep.com](http://www.ep-ep.com)

## ▣ FEATURE

---

### ■ Patented Design:

Ergonomic tiller bounded with key switch, BDI and trouble-shooting indicator enhances easy and accurate operation.



### ■ External Control System:

Patent designed external control system not only protects controller in place but also provides easy access for maintenance.

### ■ Optimized Harness Layout:

Optimized wire harness layout lowers twist failure rate.

### ■ Front Detachable Battery Cover:

Innovative Design, Easy for Battery Replacement.

### ■ Emergency Switch:

Upgraded emergency switch ensures safety.

### ■ Cover for Driving Wheel:

Strong cover for driving wheel ensures the safety of the operator.

### ■ Charger:

Upper-installed Charger, Better Heat-Exhausting, Higher Charging Efficiency



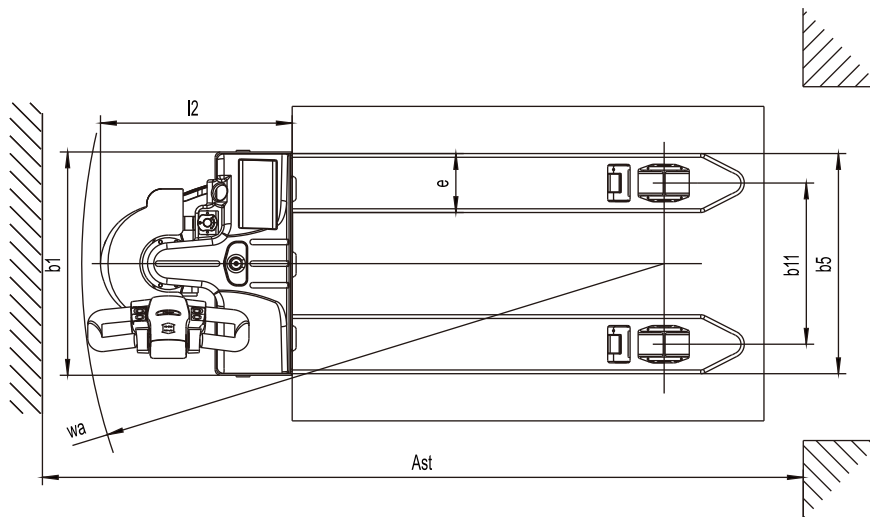
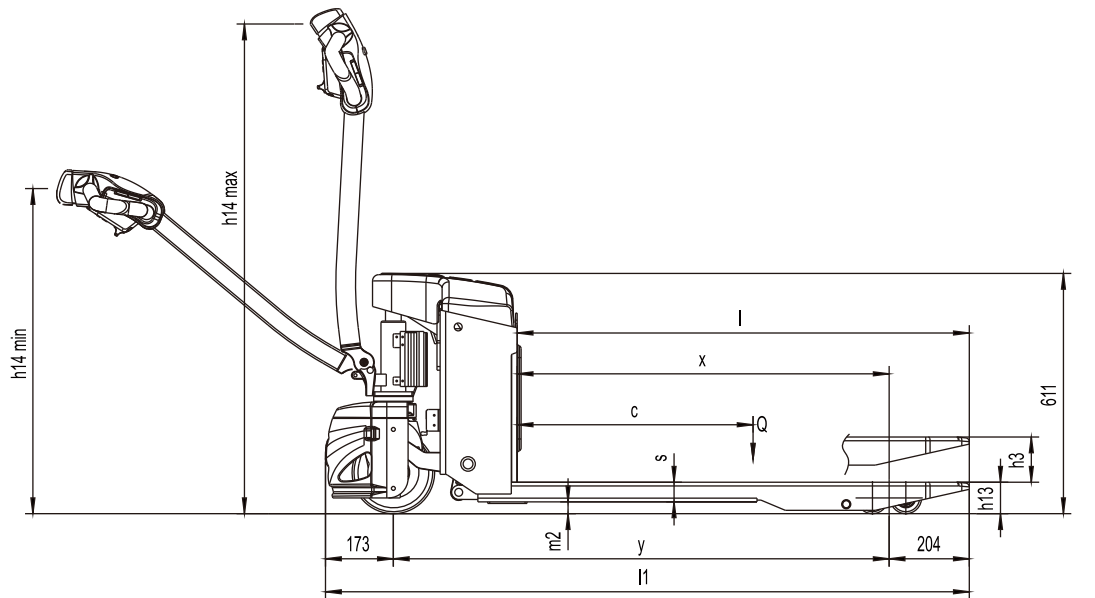
# Electric Pallet Truck 1.5t

## EPT20-15ET2

Distinguishing mark				
1.1	Manufacturer		EP	
1.2	Model designation		EPT20-15ET2	
1.3	Drive unit		Electric	
1.4	Operator type		pedestrian	
1.5	rated capacity	Q	kg	1500
1.6	Load center distance	c	mm	600
1.8	Load distance	x	mm	889/946
1.9	Wheelbase	y	mm	1261/1205
Weight				
2.1	Service weight (include battery)		kg	195
2.2	Axle loading, laden driving side/loading side		kg	565/1130
2.3	Axle loading, unladen driving side/loading side		kg	155/40
Types,Chassis				
3.1	Tyre type driving wheels/loading wheels			PU/ PU
3.2	Tyre size, driving wheels (diameter×width)		mm	Φ210×70
3.3	Tyre size, loading wheels (diameter×width)		mm	2x Φ78×60 (Φ78×88)
3.4	Tyre size, caster wheels (diameter×width)		mm	
3.5	Wheels, number driving, caster/loading (x=drive wheels)		mm	1x /4 ( 1x /2)
3.6	Track width, front,driving side	b <sub>10</sub>	mm	
3.7	Track width,rear,loading side	b <sub>11</sub>	mm	410 (535)
Dimensions				
4.4	Lift height	h <sub>3</sub>	mm	115
4.9	Height drawbar in driving position min./max.	h <sub>14</sub>	mm	790/1225
4.15	Lowered height	h <sub>13</sub>	mm	80
4.19	Overall length	l <sub>1</sub>	mm	1638
4.20	Length to face of forks	l <sub>2</sub>	mm	488
4.21	Overall width	b <sub>1</sub> / b <sub>2</sub>	mm	568 (685)
4.22	Fork dimensions	s/ e/ l	mm	50/150/1150
4.25	Distance between fork-arms	b <sub>5</sub>	mm	560 (685)
4.32	Ground clearance, center of wheelbase	m <sub>2</sub>	mm	30
4.34.1	Aisle width for pallets 1000 × 1200 crossways	Ast	mm	1739
4.34.2	Aisle width for pallets 800 × 1200 lengthways	Ast	mm	1939
4.35	Turning radius	Wa	mm	1485
Performance data				
5.1	Travel speed, laden/ unladen	km/ h	km/h	4/4.5
5.2	Lifting speed, laden/ unladen		m/ s	0.029/0.038
5.3	Lowering speed, laden/ unladen		m/ s	0.046/0.033
5.8	Max. gradeability, laden/unladen			2/6
5.10	Service brake type			Electromagnetic
Electric-engine				
6.1	Drive motor rating S2 60 min		kW	0.65
6.2	Lift motor rating at S3 15%		kW	0.84
6.3	The maximum allowed size battery		mm	
6.4	Battery voltage/nominal capacity K20			24/65
6.5	Battery weight		kg	22.5x2
Addition data				
8.1	Type of drive control			DC
10.5	Steering type			Mechanical
10.7	Sound pressure level at the driver's ear			74

1.The parameters in the table are of the standard model. For more information, please contact us.

2.The parameters are subject to change without notice.



## Option

Options	EPT20-15ET2
Fork length	• 800/915/1000/1070/1100/1300/1400mm
Fork width	• 520/600mm
Single load wheel	•
Driving wheel	• PU wheel with Pattern
Battery capacity	• 85AH
Backrest height	• 1220mm (48in)/1520mm (60in)